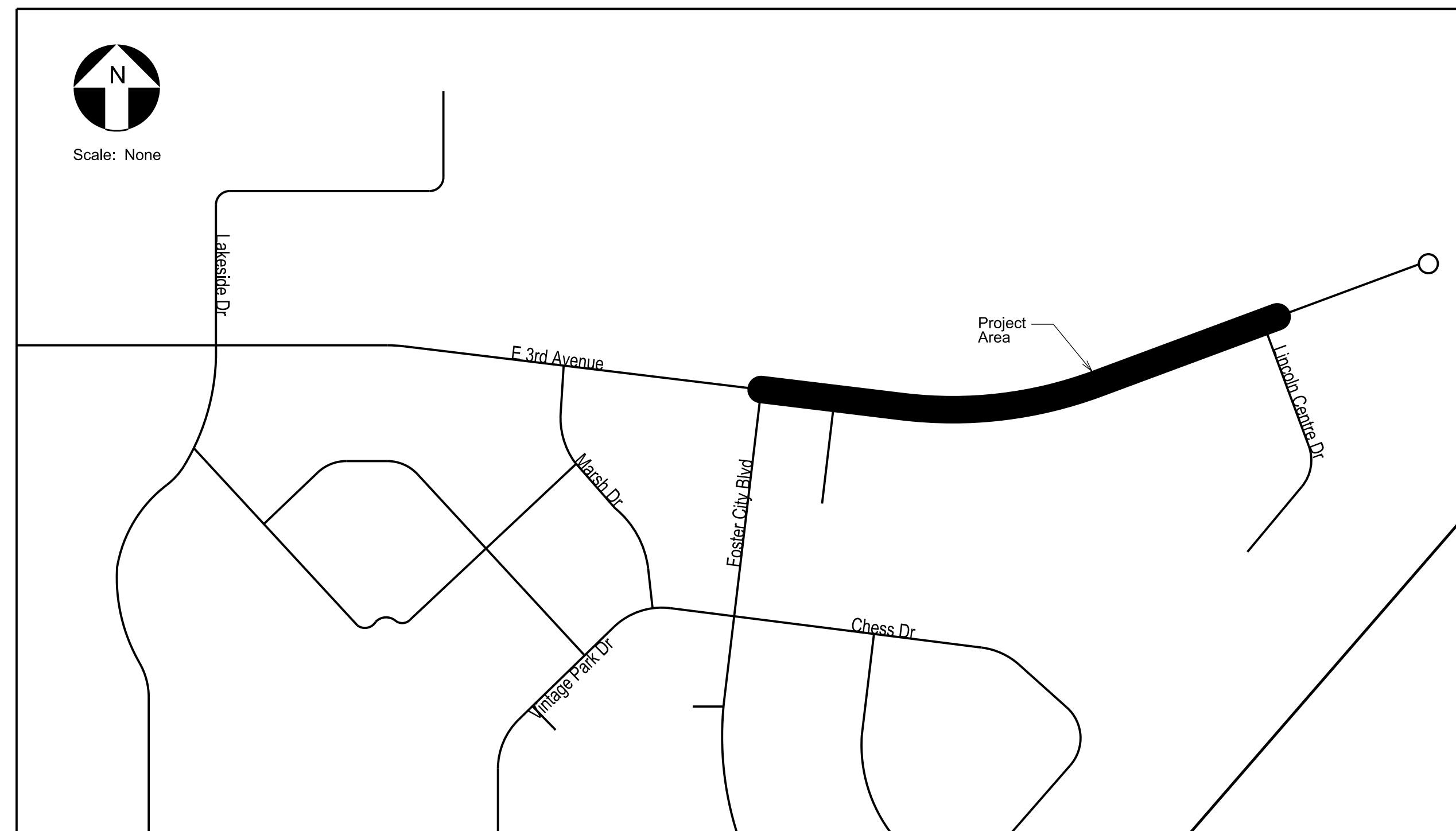


Project Map



CITY OF FOSTER CITY
Traffic Improvements
at
Lincoln Centre Drive & East Third Avenue
CIP: 301-658

WORK SCOPE:

- Traffic Signal Installation at E 3rd Avenue & Lincoln Centre Drive
- Streetlight Improvements
- ADA Pedestrian Ramp Upgrades
- Traffic Signal Interconnect Installation
- Pedestrian Pathway Improvements
- PG&E Service Point Connection
- Signage & Striping Improvements

CITY-FURNISHED MATERIALS:

- Traffic Signal Pole Standards
- Traffic Signal Mastarms
- Streetlight luminaire Arms (LED Streetlight Fixtures to be Contractor-Furnished)
- Traffic Signal Pole Standard Anchor Bolts
- Traffic Signal Cabinet and All Auxiliary Equipment in Cabinet including Controller and Video Detection Equipment (Minus Accessible Pedestrian Signal Equipment)
- Service Pedestal and Battery-Back-Up System (BBS)
- Traffic Signal Cabinet and Service Pedestal Anchor Bolts

NOTES:

- Before excavating call USA (Underground Service Alert) at 811 seven (7) business days before planned work.

SHEET INDEX:

1. Title Sheet
2. Notes Sheet
3. Traffic Signal Installation Plan
4. Traffic Signal Schedules
5. Traffic Signal Interconnect Plan
6. Signage & Striping Plan
7. Utility Plan
8. Storm Water Pollution Prevention Plan

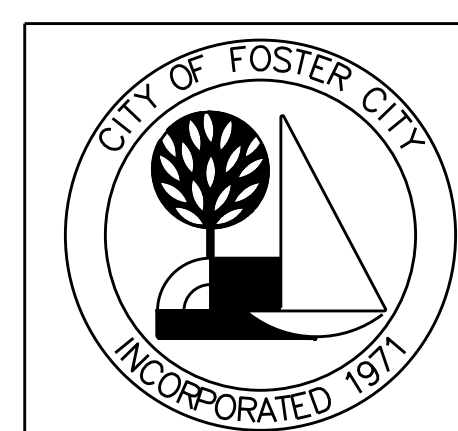
CCO #1 - 10/09/2017
 CCO #2 - 10/27/2017
 CCO #3 - 11/16/2017

Engineer's Stamp

Traffic Patterns
 P.O. Box 25
 Danville, CA 94526
 O: (408) 916-8141
 www.trafficpatterns.net
 info@trafficpatterns.net

REVISIONS:			
NO.	DATE	DESCRIPTION	BY

APPROVED BY:	
JEFF C. MONEDA DIRECTOR OF PUBLIC WORKS/CITY ENGINEER	DATE
DESIGNED BY:	
JAIME O. RODRIGUEZ PRINCIPAL, TRAFFIC PATTERNS	DATE



ESTERO MUNICIPAL IMPROVEMENT DISTRICT
 CITY OF FOSTER CITY, CALIFORNIA
 CIP NO. 301-658

TRAFFIC IMPROVEMENTS AT
 LINCOLN CENTRE DRIVE &
 EAST THIRD AVENUE

TITLE SHEET

SCALE:	
DRAWN BY: XX	DATE: 0/0/00
CHK BY: XX	DATE: 0/0/00
SURVEY BY:	
BOOK NO:	DATE: 0/0/00

SHEET

1 OF 8

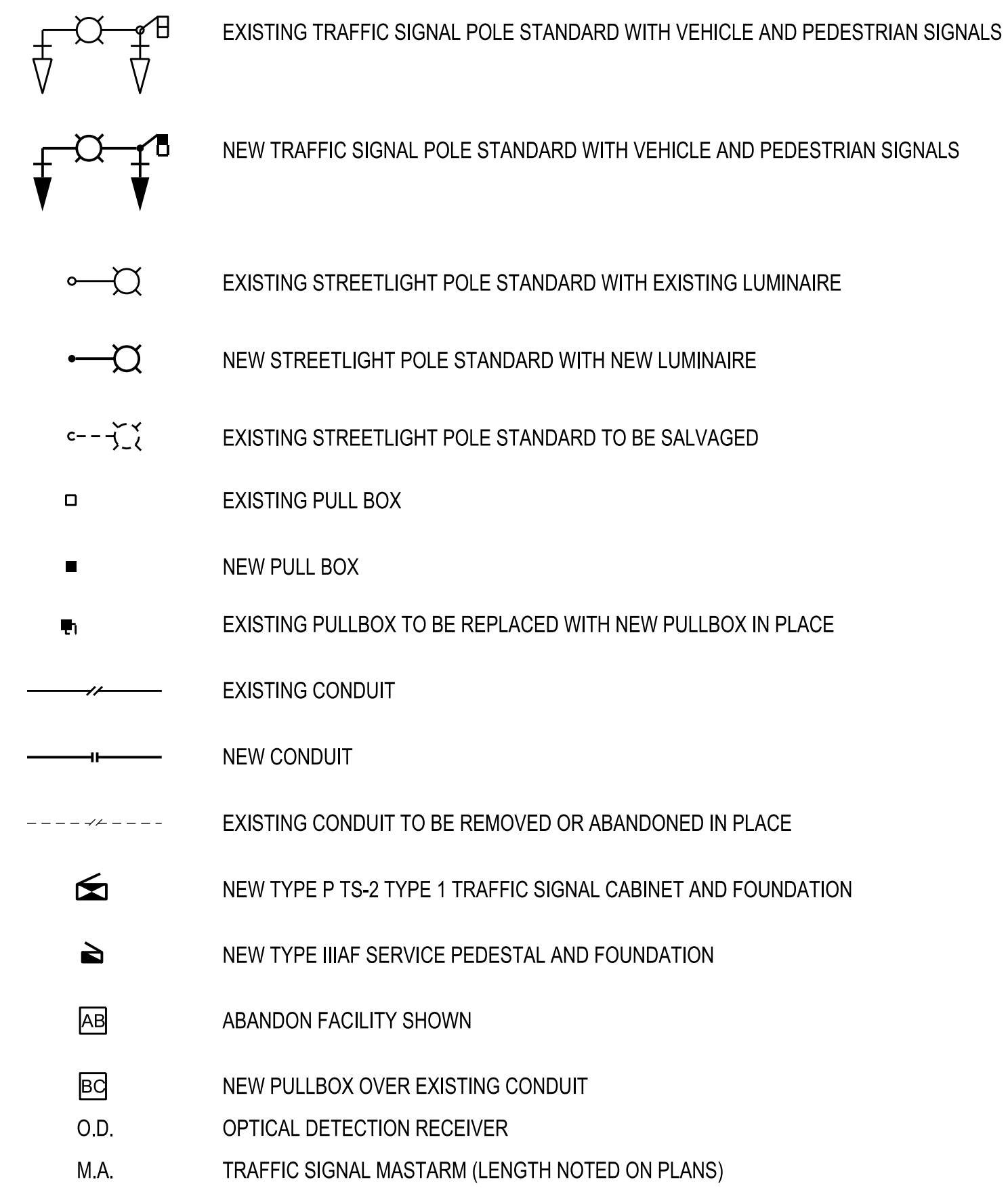
GENERAL NOTES:

- IT SHALL BE THE RESPONSIBILITY OF THE CONTRACTOR TO APPLY FOR A CITY OF FOSTER CITY BUSINESS LICENSE IMMEDIATELY UPON NOTIFICATION OF INTENT TO AWARD AND PRIOR TO PROJECT AWARD.
- THE CONTRACTOR SHALL PROVIDE TRAFFIC CONTROL PLANS, PREPARED BY A REGISTERED TRAFFIC ENGINEER, PRIOR TO THE START OF WORK.
- CONTRACTOR SHALL PROVIDE REGULAR STREET SWEEPING, OR AS DIRECTED BY THE PROJECT INSPECTOR.
- CONTRACTOR MUST COMPLY WITH CITY OF FOSTER CITY STANDARD SPECIFICATIONS FOR CONSTRUCTION PROJECTS AND CALTRANS STANDARD PLANS 2015 FOR TRAFFIC SIGNAL STANDARDS CONSTRUCTION.
- IT THE RESPONSIBILITY OF THE CONTRACTOR TO CONTACT U.S.A. LOCATE 7-BUSINESS DAYS PRIOR TO THE START OF CONSTRUCTION TO HAVE THE PROJECT AREA MARKED FOR UTILITIES. THE CONTRACTOR SHALL NOTIFY THE CITY INSPECTOR IMMEDIATELY IF UTILITY MARKINGS ARE IN CONFLICT WITH ANY PORTION OF WORK. THE CONTRACTOR SHALL ALSO BE RESPONSIBLE FOR TAKING DIGITAL PHOTOGRAPHS OR BUFFERED VIDEO OF THE PROJECT AREA AND DELIVERING A COPY OF ALL DIGITAL FILES TO THE PROJECT INSPECTOR PRIOR TO THE START OF CONSTRUCTION.
- NEW PEDESTRIAN RAMP AND ADJACENT SIDEWALK SHALL BE 4-INCHES PCC ON TOP OF 4-INCHES CLASS II AGGREGATE BASE
- NEW GUTTER PLAN SHALL BE 6-INCHES PCC ON TOP OF 4-INCHES CLASS II AGGREGATE BASE

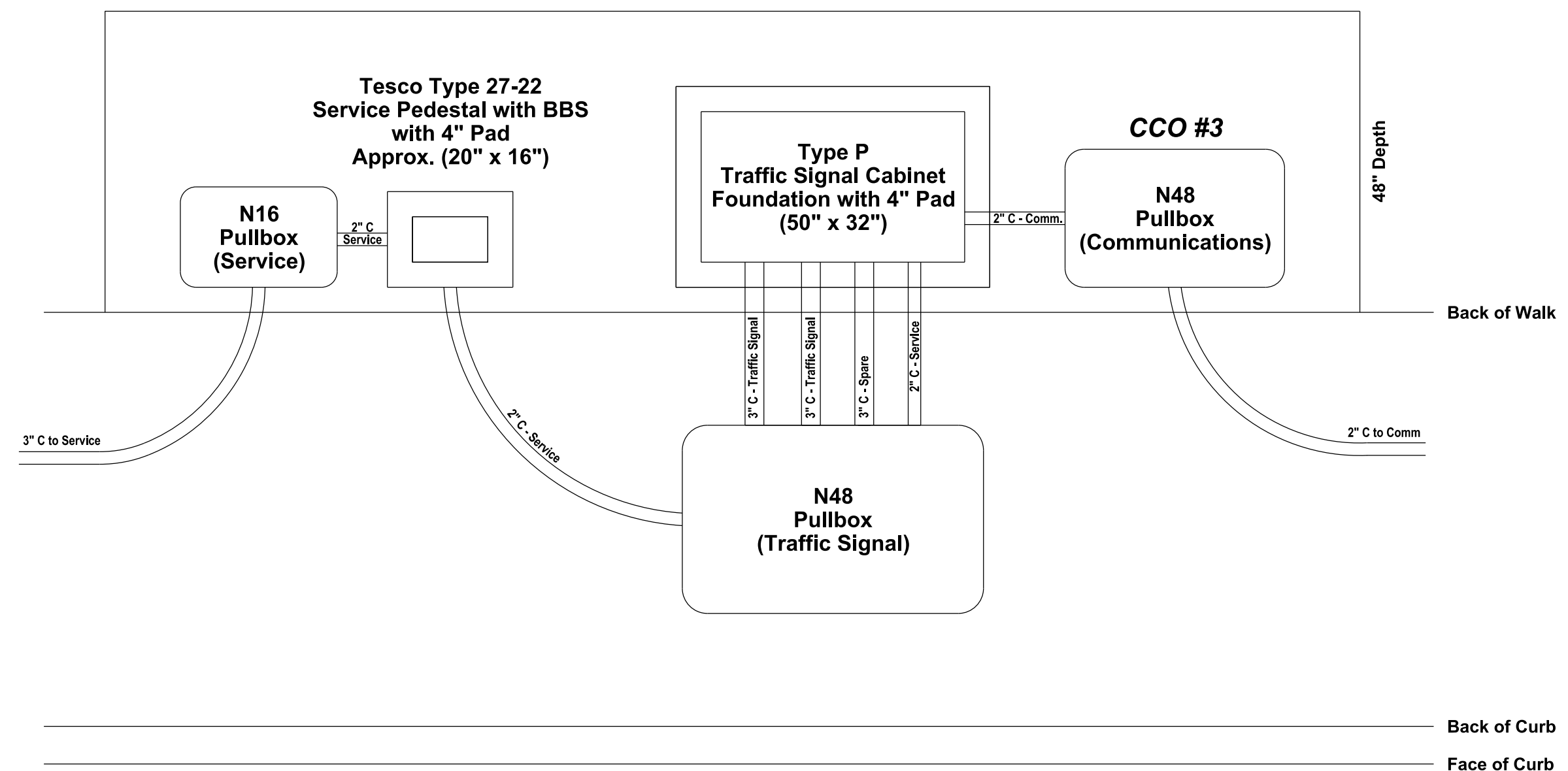
TRAFFIC SIGNAL GENERAL NOTES:

- ALL WORK, MATERIALS AND EQUIPMENT SHALL CONFORM THE REQUIREMENTS ON THE CALIFORNIA DEPARTMENT OF TRANSPORTATION, CALTRANS, STANDARD PLANS AND SPECIFICATIONS DATED 2015, THE CALIFORNIA MANUAL ON UNIFORM TRAFFIC CONTROL DEVICES (CA MUTCD 2014), AND THE SPECIAL PROVISIONS FOR THIS PROJECT.
- UTILITIES SHOWN ON THESE PLANS ARE CORRECT AND ACCURATE TO THE EXTENT OF AVAILABLE RECORDS. THE CONTRACTOR IS REQUIRED TO CONTACT UTILITY LOCATION AT 811 TO ASCERTAIN THE EXACT LOCATION OF UNDERGROUND FACILITIES PRIOR TO THE START OF WORK. THE CONTRACTOR SHALL BEAR THE TOTAL EXPENSE OF REPAIR OR REPLACEMENT OF ANY UNDERGROUND FACILITIES DAMAGED AS PART OF CONSTRUCTION, INCLUDING UTILITIES NOT IDENTIFIED ON THESE PLANS.
- THE CONTRACTOR SHALL OBTAIN ALL NECESSARY PERMITS AND NOTIFY ALL UTILITY COMPANIES AND UNDERGROUND SERVICE ALERT A MINIMUM OF 48 HOURS PRIOR TO THE START OF WORK. IT SHALL BE THE RESPONSIBILITY OF THE CONTRACTOR TO COORDINATE ALL PHASES OF CONSTRUCTION WITH THE VARIOUS UTILITY COMPANIES INVOLVED.
- THE LOCATION OF TRAFFIC SIGNAL STANDARDS SHOWN ON THESE PLANS ARE SCHEMATIC ONLY. THE CONTRACTOR SHALL BE RESPONSIBLE FOR FIELD MARKING THE LOCATION OF PROPOSED TRAFFIC SIGNAL STANDARD LOCATIONS FOR APPROVAL BY THE PROJECT INSPECTOR. INCLUDING ANY ADJACENT CIVIL IMPROVEMENTS SUCH AS SIDEWALK FACILITIES TO ASSIST IN VALIDATING POLE STANDARD LOCATIONS. UPON CONFIRMATION OF THE CONTRACTOR'S PROPOSED LOCATIONS, THE CONTRACTOR SHALL PROCEED TO HAND DIG EACH LOCATION FOR A MINIMUM OF 5-FT BEFORE ANY FURTHER EXCAVATION USING MECHANICAL EQUIPMENT. THE CONTRACTOR SHALL NOTIFY THE PROJECT INSPECTOR IMMEDIATELY IF ANY CONFLICTS WITH POLE STANDARD LOCATIONS ARE IDENTIFIED DURING THE MARKING OR CONSTRUCTION PROCESS.
- THE FOLLOWING TRAFFIC SIGNAL EQUIPMENT SHALL BE PROVIDED BY THE CITY TO THE CONTRACTOR FOR INSTALLATION AS PART OF THIS PROJECT:
 - TRAFFIC SIGNAL CABINET AND ALL INTERNAL AUXILIARY EQUIPMENT (MINUS ACCESSIBLE PEDESTRIAN SIGNAL CONTROL MODULE)
 - SERVICE PEDESTAL AND INTERNAL BATTERY BACK-UP SYSTEM
 - TRAFFIC SIGNAL POLE STANDARDS AND ANCHOR BOLTS
 - TRAFFIC SIGNAL MASTARMS
 - STREETLIGHT MASTARMS
- THE CONTRACTOR SHALL BE RESPONSIBLE FOR THE INSTALLATION OF ALL CITY-FURNISHED MATERIALS. ALL CITY-FURNISHED MATERIALS ARE LOCATED AT THE CITY OF FOSTER CITY - PUBLIC WORKS CORPORATION YARD - 100 LINCOLN CENTRE DRIVE, LOCATED ADJACENT TO THE PROJECT INTERSECTION.
- THE CONTRACTOR SHALL BE RESPONSIBLE FOR FURNISHING AND INSTALLING ALL UNDERGROUND FOUNDATION CAGES FOR CITY-FURNISHED POLE STANDARD AND ANCHOR BOLTS. FOUNDATIONS SHALL BE BUILT TO THE CURRENT CALIFORNIA DEPARTMENT OF TRANSPORTATION - CALTRANS - STANDARD PLANS 2015 EDITION.
- ALL NEW TRAFFIC SIGNAL FIXTURES, FRAMEWORK, BACKPLATES AND VISORS SHALL BE PAINTED FLAT BLACK BY THE MANUFACTURER
- ALL NEW TRAFFIC SIGNAL INDICATIONS, VEHICLE AND PEDESTRIAN, SHALL BE LIGHT EMITTING DIODE (LED) WITH AN INCANDESCENT LAMP LOOK AS MANUFACTURED BY DIALITE, OR APPROVED EQUAL.
- ALL NEW PEDESTRIAN SIGNALS SHALL INCLUDE AN LED COUNTDOWN TIMER. THE COUNTDOWN DIGITS SHALL BE DOUBLE-ROW DIGITS AND BE CAPABLE OF DETECTING AND ADJUSTING TO PROGRAMMED WALK AND FLASHING DONT WALK TRAFFIC SIGNAL TIMING PARAMETERS FROM THE TRAFFIC SIGNAL CONTROLLER WITHIN TWO PEDESTRIAN INTERVALS.
- NEW PEDESTRIAN PUSH BUTTON FACILITIES SHALL BE ACCESSIBLE PEDESTRIAN SIGNAL (APS) TYPE AS MANUFACTURED BY POLARA ENTERPRISES, OR APPROVED EQUAL. EACH APS SHALL INCLUDE A 2-INCH VIBRO-TACTILE INDICATOR, LOCATE TONE ADJUSTABLE TO AMBIENT NOISE CONDITIONS, RED LATCH LED INDICATOR FOR WALK DEMAND, AND OPERATE AS A 2-WIRE SYSTEM TO MATCH THESE PROJECT PLANS. EACH APS SHALL BE PREPROGRAMMED BY THE MANUFACTURER WITH STREET NAMES INDICATING WALK INDICATIONS. ALL APS UNITS SHALL BE PREPAINTED BY THE MANUFACTURER IN FLAT BLACK COLOR. EACH APS UNIT SHALL INCLUDE A PLACARD PROVIDING INSTRUCTIONS FOR DEVICE USE. THE APS CONTROL MODULE SHALL BE FURNISHED AND INSTALLED INTO THE CITY-FURNISHED TRAFFIC SIGNAL CABINET BY THE CONTRACTOR.
- CONTRACTOR SHALL PROVIDE PRODUCT CUT SHEETS FOR REVIEW AND APPROVAL BY THE CITY PRIOR TO PROCUREMENT OF ANY MATERIALS INCLUDING LED STREETLIGHT FIXTURES, ACCESSIBLE PEDESTRIAN SIGNALS, AND UNDERGROUND CONDUIT & PULLBOX FACILITIES. EQUIPMENT PROCURED OR INSTALLED WITHOUT PREVIOUSLY APPROVED PRODUCT CUT SHEETS SHALL BE REMOVED AND REPLACED BY THE CONTRACTOR AT CONTRACTOR'S SOLE EXPENSE.
- WHERE TRAFFIC SIGNAL POLE OR PULL BOX INSTALLATION DAMAGES EXISTING SIDEWALK, CONTRACTOR SHALL WORK WITH THE PROJECT INSPECTOR TO IDENTIFY LIMITS FOR SIDEWALK REMOVE AND REPLACEMENT. CONTRACTOR SHOULD ASSUME UP TO 3 YARDS OF SIDEWALK REMOVE AND REPLACEMENT PER TRAFFIC SIGNAL POLE STANDARD LOCATION.

LEGEND AND ABBREVIATIONS:



TYPICAL TRAFFIC SIGNAL CABINET AND SERVICE PEDESTAL PAD CONSTRUCTION DETAIL



CCO #1 - 10/09/2017
 CCO #2 - 10/27/2017
 CCO #3 - 11/16/2017

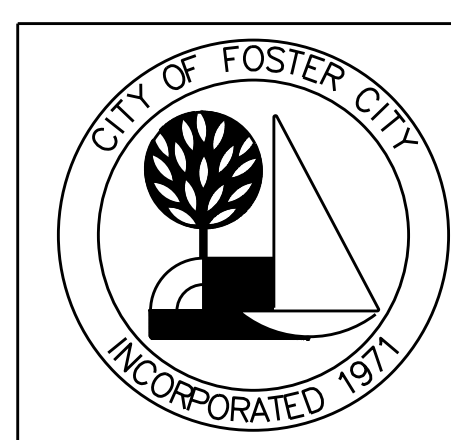
Engineer's Stamp

Traffic Patterns

P.O. Box 25
 Danville, CA 94526
 O: (408) 916-8141
 www.trafficpatterns.net
 info@trafficpatterns.net

REVISIONS:			
NO.	DATE	DESCRIPTION	BY

APPROVED BY:	
JEFF C. MONEDA DIRECTOR OF PUBLIC WORKS/CITY ENGINEER	DATE
DESIGNED BY:	DATE
JAIME O. RODRIGUEZ PRINCIPAL, TRAFFIC PATTERNS	DATE



ESTERO MUNICIPAL IMPROVEMENT DISTRICT
 CITY OF FOSTER CITY, CALIFORNIA
 CIP NO. 301-658

TRAFFIC IMPROVEMENTS AT
 LINCOLN CENTRE DRIVE &
 EAST THIRD AVENUE

NOTES

SCALE:	
DRAWN BY: XX	DATE: 0/0/00
CHK BY: XX	DATE: 0/0/00
SURVEY BY:	DATE:
BOOK NO:	DATE: 0/0/00

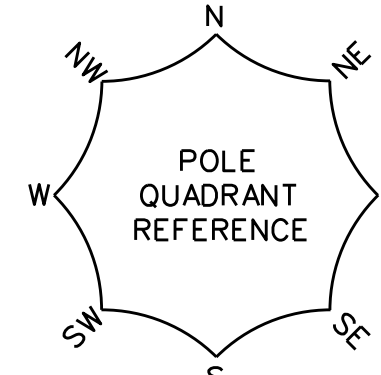
SHEET

2 OF 8

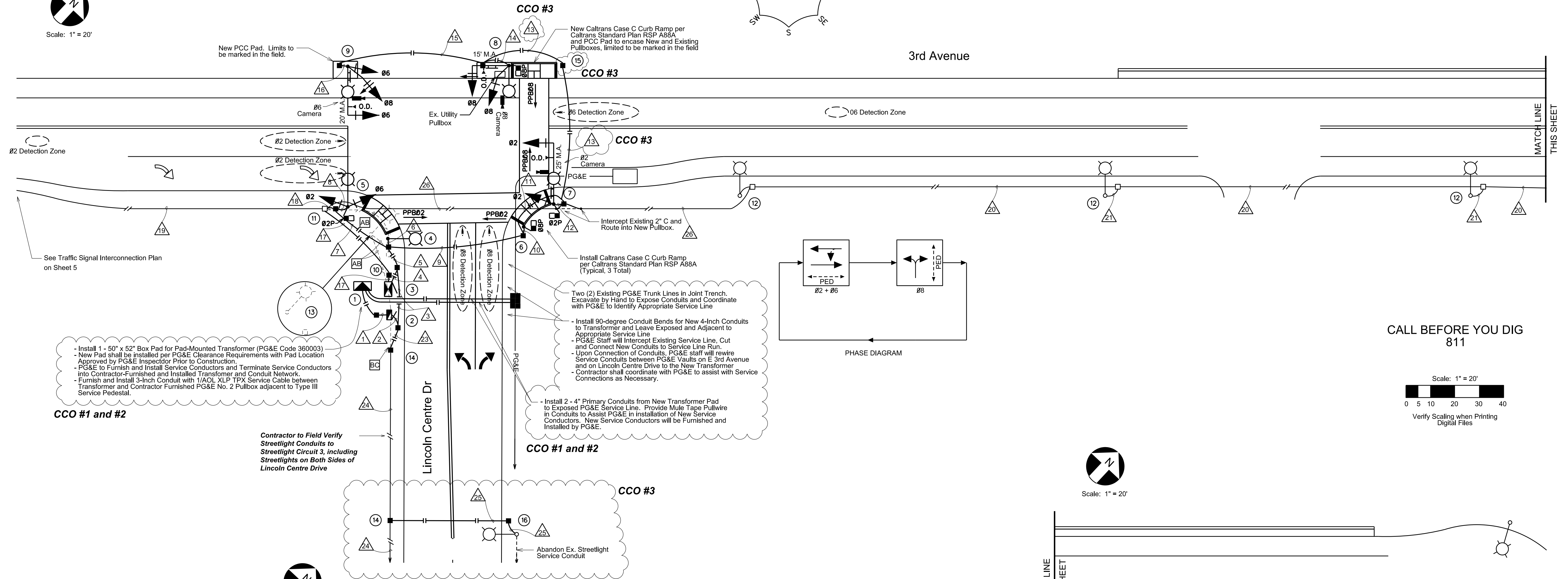
Traffic Signal Installation Plan
E 3rd Avenue & Lincoln Centre Drive



Scale: 1" = 20'



3rd Avenue



- Install 1 - 50" x 52" Box Pad for Pad-Mounted Transformer (PG&E Code 360003)
- New Pad shall be installed per PG&E Clearance Requirements with Pad Location Approved by PG&E Inspector Prior to Construction.
- PG&E to Furnish and Install Service Conductors and Terminate Service Conductors into Contractor-Furnished and Installed Transformer and Conduit Network.
- Furnish and Install 3-Inch Conduit with 1/AOL XLP TPX Service Cable between Transformer and Contractor Furnished PG&E No. 2 Pullbox adjacent to Type III Service Pedestal.

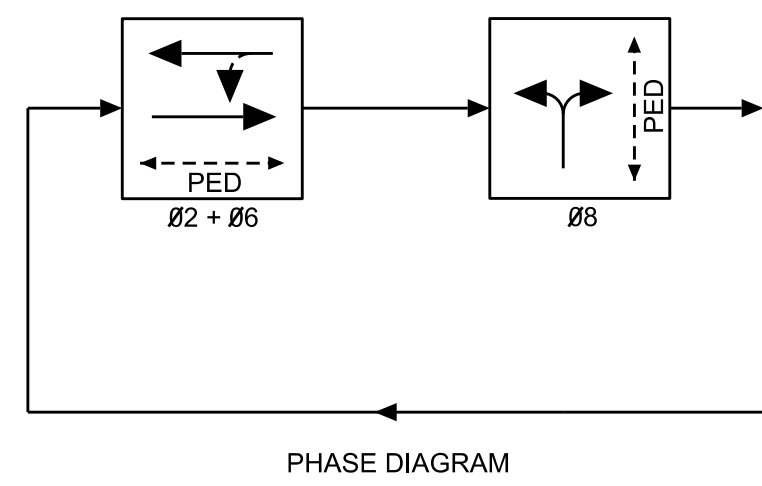
CCO #1 and #2

Contractor to Field Verify Streetlight Conduits to Streetlight Circuit 3, including Streetlights on Both Sides of Lincoln Centre Drive

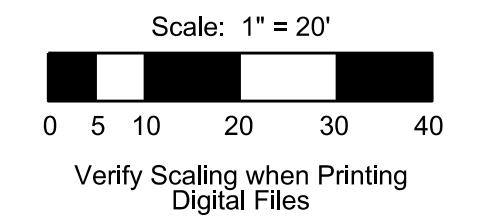
- Install 90-degree Conduit Bends for New 4-Inch Conduits to Transformer and Leave Exposed and Adjacent to Appropriate Service Line
- PG&E Staff will Intercept Existing Service Line. Cut and Connect New Conduits to Service Line Run.
- Upon Connection of Conduits, PG&E staff will rewire Service Conduits between PG&E Vaults on E 3rd Avenue and on Lincoln Centre Drive to the New Transformer
- Contractor shall coordinate with PG&E to assist with Service Connections as Necessary.

CCO #1 and #2

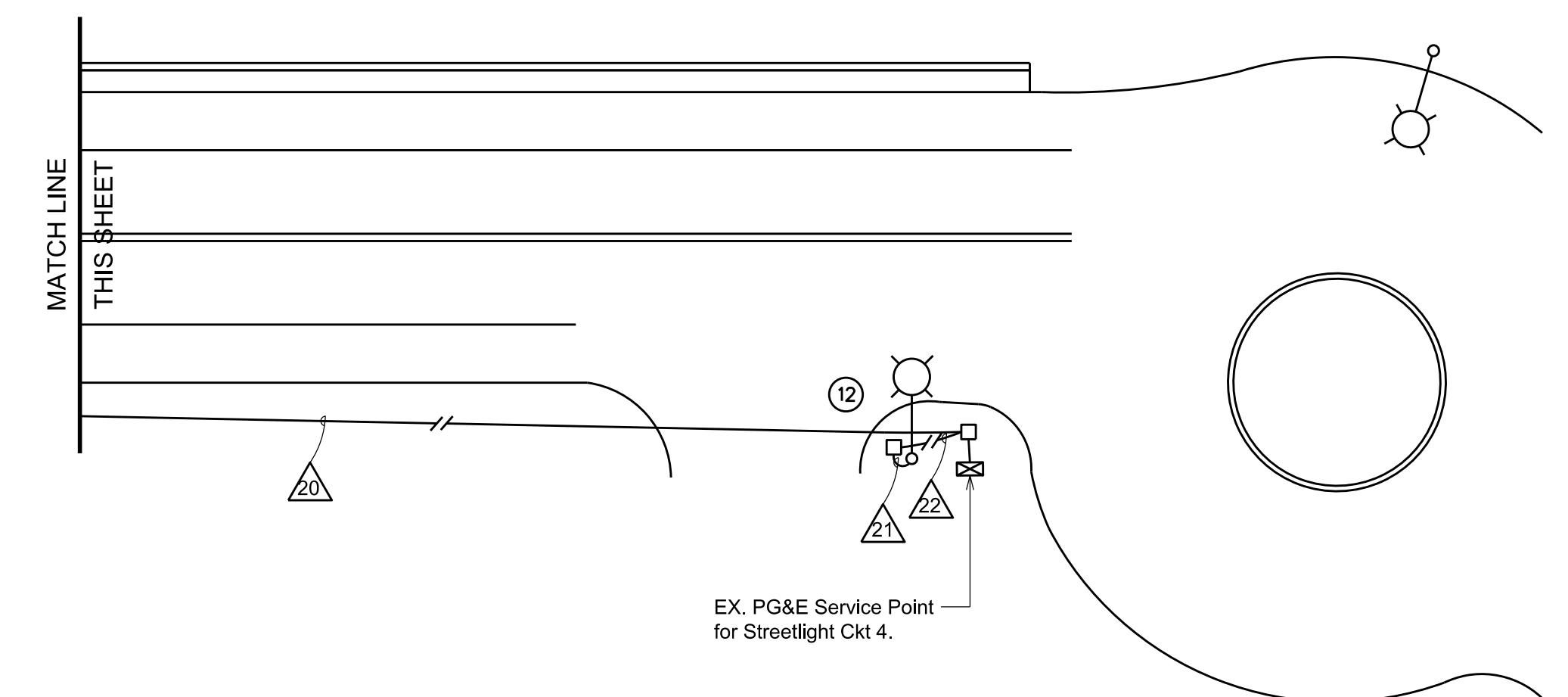
CCO #3



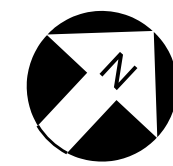
CALL BEFORE YOU DIG
811



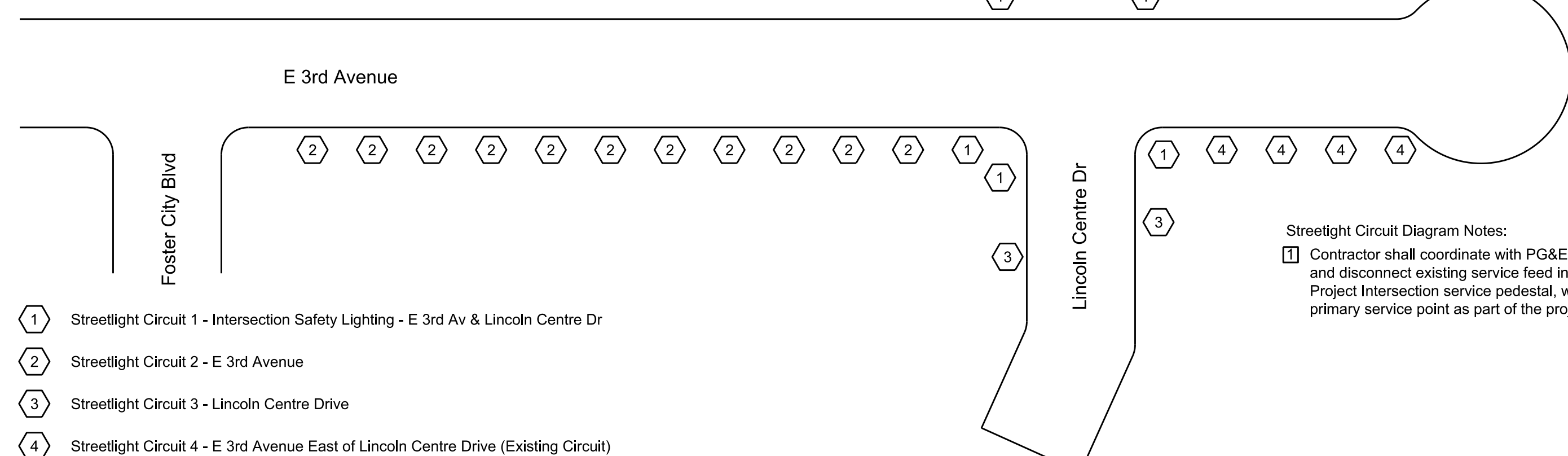
Scale: 1" = 20'



STREETLIGHT CIRCUIT DIAGRAM



Scale: None



Streetlight Circuit Diagram Notes:

- 1 Contractor shall coordinate with PG&E to identify the existing Streetlight Service Feed and disconnect existing service feed in conjunction with the activation of the new Project Intersection service pedestal, which will become the streetlight circuit diagram primary service point as part of the project.

- 1 Streetlight Circuit 1 - Intersection Safety Lighting - E 3rd Av & Lincoln Centre Dr
- 2 Streetlight Circuit 2 - E 3rd Avenue
- 3 Streetlight Circuit 3 - Lincoln Centre Drive
- 4 Streetlight Circuit 4 - E 3rd Avenue East of Lincoln Centre Drive (Existing Circuit)

CCO #1 - 10/09/2017
CCO #2 - 10/27/2017
CCO #3 - 11/16/2017



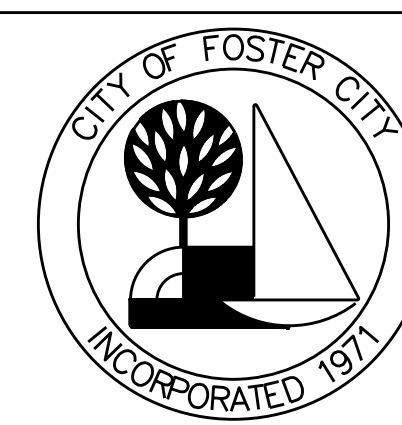
Traffic Patterns

P.O. Box 25
Danville, CA 94526
O: (408) 916-8141
www.trafficpatterns.net
info@trafficpatterns.net



REVISIONS:			
NO.	DATE	DESCRIPTION	BY

APPROVED BY:	
JEFF C. MONEDA DIRECTOR OF PUBLIC WORKS/CITY ENGINEER	DATE
DESIGNED BY:	DATE
JAIME O. RODRIGUEZ PRINCIPAL, TRAFFIC PATTERNS	DATE



ESTERO MUNICIPAL IMPROVEMENT DISTRICT
CITY OF FOSTER CITY, CALIFORNIA
CIP NO. 301-658

TRAFFIC IMPROVEMENTS AT
LINCOLN CENTRE DRIVE &
EAST THIRD AVENUE

TRAFFIC SIGNAL PLAN SHEET

SCALE:	
DRAWN BY: XX	DATE: 0/0/00
CHK BY: XX	DATE: 0/0/00
SURVEY BY:	DATE: 0/0/00
BOOK NO:	DATE: 0/0/00

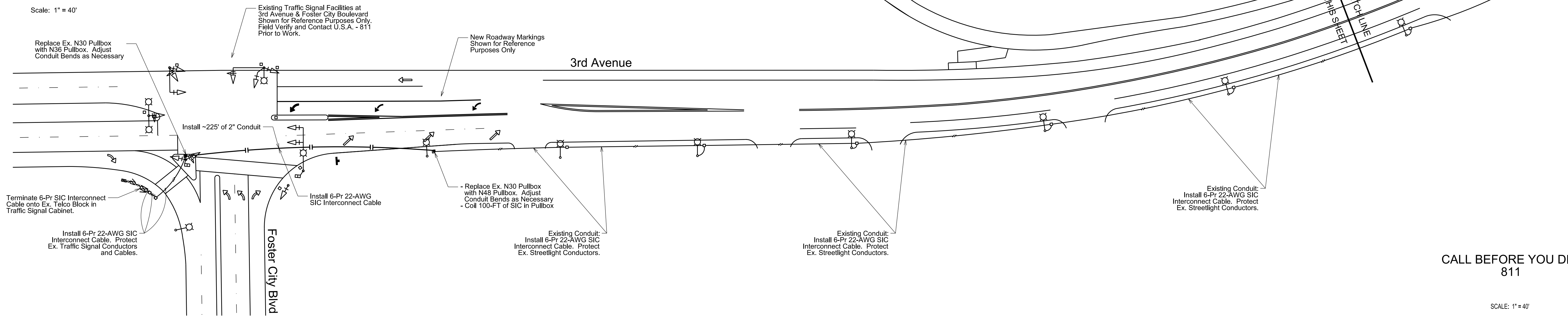
SHEET

3 OF 8

Traffic Signal Interconnect Plan
3rd Avenue - Foster City Blvd to Lincoln Centre Dr

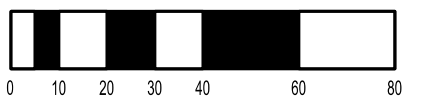


Scale: 1" = 40'



CALL BEFORE YOU DIG
811

SCALE: 1" = 40'

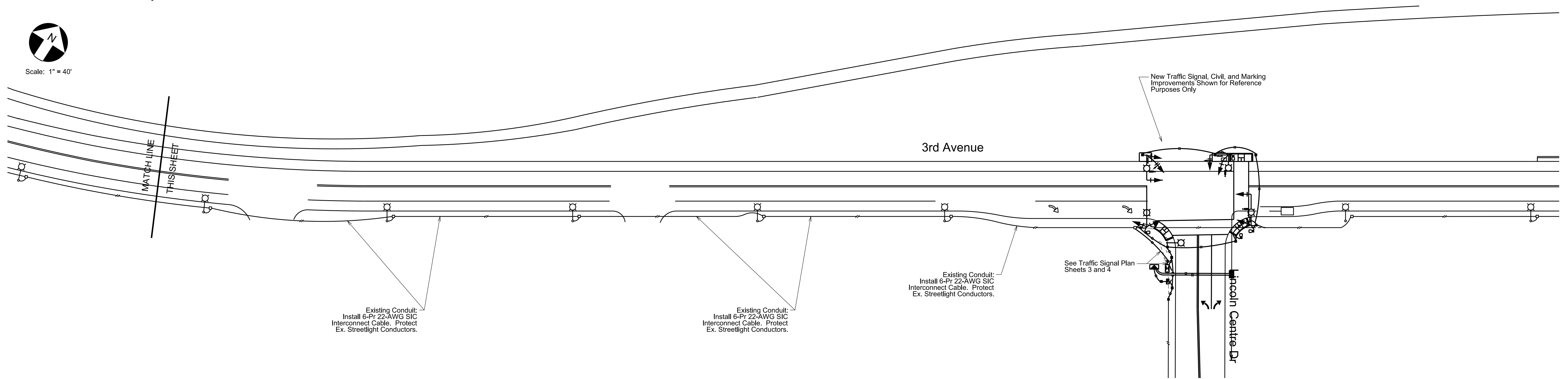


VERIFY SCALE WHEN PRINTING DIGITAL FILES

Traffic Signal Interconnect Plan
3rd Avenue - Foster City Blvd to Lincoln Centre Dr



Scale: 1" = 40'



CCO #1 - 10/09/2017
CCO #2 - 10/27/2017
CCO #3 - 11/16/2017



Traffic Patterns

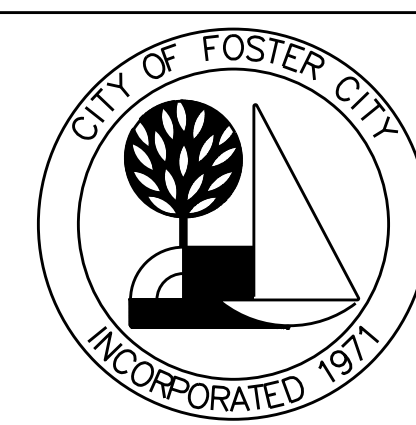
P.O. Box 25
Danville, CA 94526
O: (408) 916-8141
www.trafficpatterns.net
info@trafficpatterns.net

Engineer's Stamp



REVISIONS:			
NO.	DATE	DESCRIPTION	BY

APPROVED BY:	
JEFF C. MONEDA DIRECTOR OF PUBLIC WORKS/CITY ENGINEER	DATE
DESIGNED BY:	
JAIME O. RODRIGUEZ PRINCIPAL, TRAFFIC PATTERNS	DATE



ESTERO MUNICIPAL IMPROVEMENT DISTRICT
CITY OF FOSTER CITY, CALIFORNIA
CIP NO. 301-658

TRAFFIC IMPROVEMENTS AT
LINCOLN CENTRE DRIVE &
EAST THIRD AVENUE

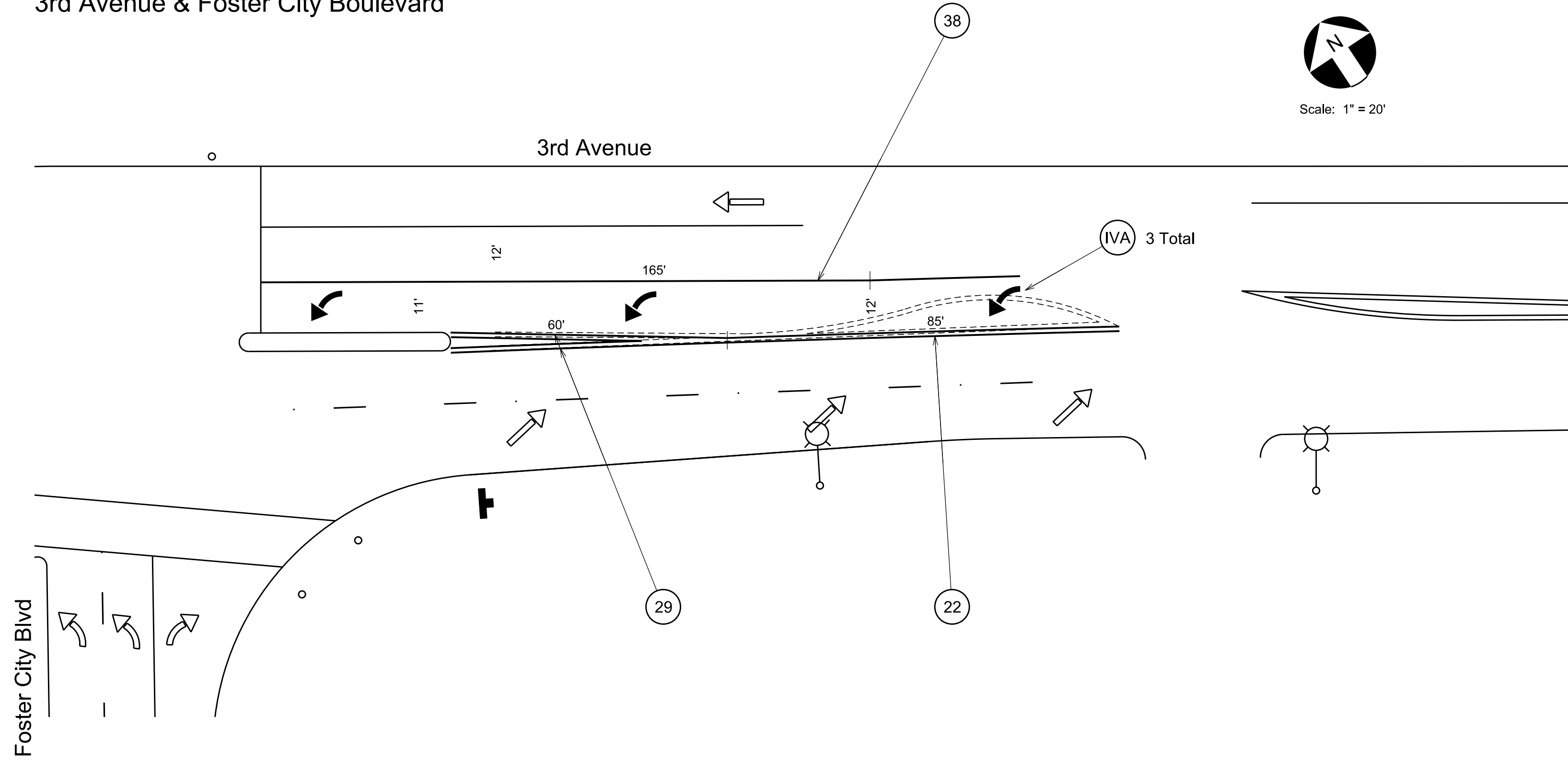
INTERCONNECT PLAN

SCALE:	
DRAWN BY: XX	DATE: 0/0/00
CHK BY: XX	DATE: 0/0/00
SURVEY BY:	
BOOK NO:	DATE: 0/0/00

SHEET

5 OF 8

Signage & Striping Plan
3rd Avenue & Foster City Boulevard

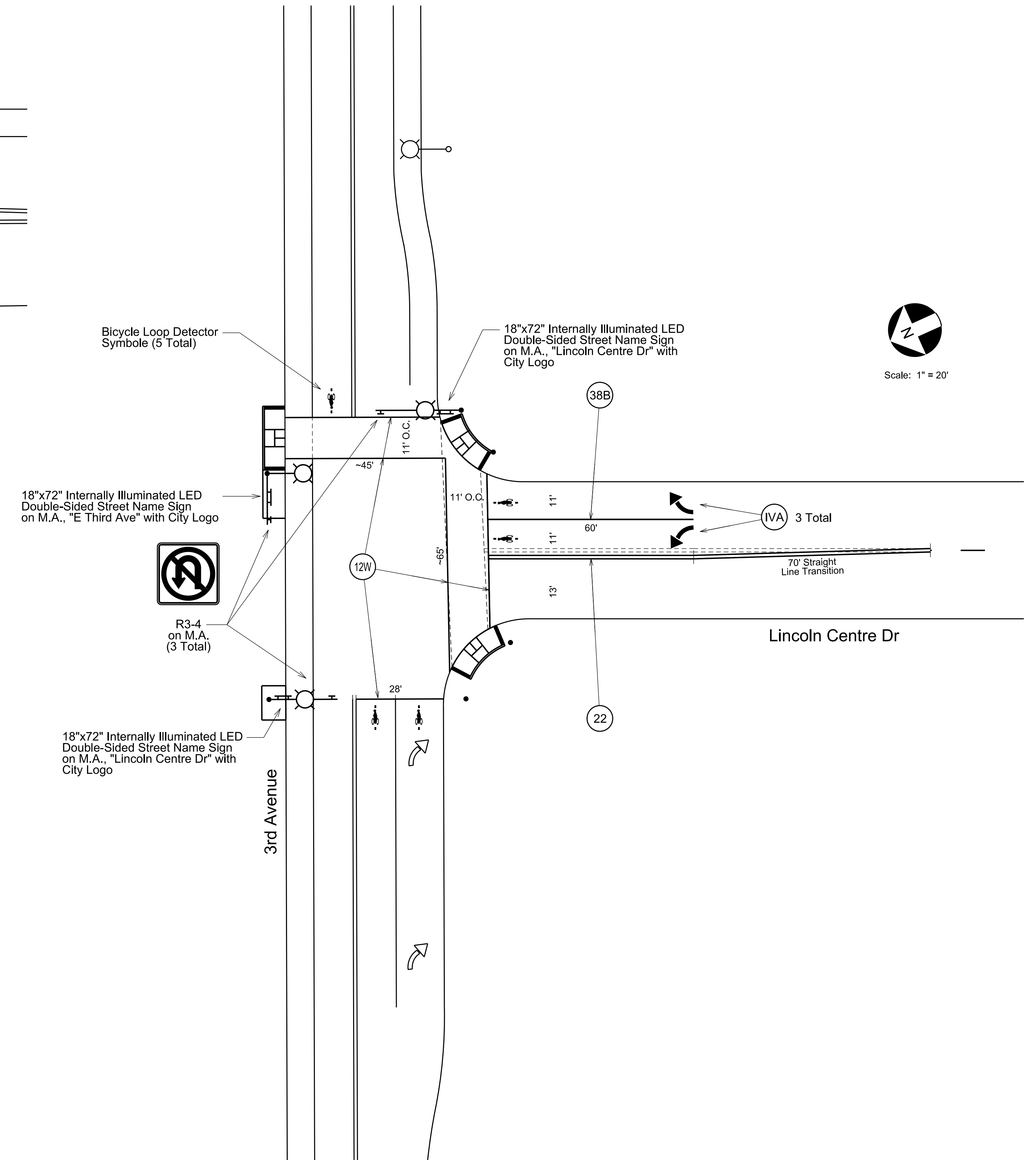


- Notes:
- Contractor shall remove any roadway markings and pavement legends that are in conflict with this plan.
 - All new roadway markings and pavements shall be thermoplastic unless noted otherwise.
 - All new Standard Highway Signs shall st Standard Size unless noted otherwise.
 - City will make available City Logo's upon award of project for Contractor to develop and submit art work for Internally Illuminated Street Name signs. Approval of art work is required prior to fabrication.

STRIPING LEGEND			
IDEN. TYPESH	STRIPING ELEMENT	IDEN. TYPESH	STRIPING ELEMENT
(1)	STATE DETAIL 4	(38)	STATE DETAIL 30
(2)	STATE DETAIL 9	(39)	STATE DETAIL 33
(10)	STATE DETAIL 10	(39C)	STATE DETAIL 38C
(22)	STATE DETAIL 22	(38)	STATE DETAIL 39
(23)	STATE DETAIL 23	(39A)	STATE DETAIL 39A
(25)	STATE DETAIL 25	(40A)	STATE DETAIL 40A
(27B)	STATE DETAIL 27B	(41A)	STATE DETAIL 41A
(40)	PAVEMENT NUMERALS (AS SHOWN)	(41)	SOLID 8" WHITE
(12W)	SOLID 12" WHITE	(42)	SOLID 12" YELLOW
(24W)	SOLID 24" WHITE	(43)	SOLID 24" YELLOW
(50)	BIKE SHARROW STENCIL	(44)	PAVEMENT MESSAGE (MESSAGE SHOWN)
(18)	TYPE I ARROW - 18"	(45)	BIKE LOOP DETECTOR STENCIL
(14A)	TYPE IV ARROW (DIRECTION SHOWN)		
(14)	TYPE VI ARROW		
(16A)	TYPE VIA ARROW (DIRECTION SHOWN)		

EST. QUANTITIES:
D22 215 LN FT
D23: 120 LN FT
12" White: 250 LN FT
Legends: 85 SQ FT

Signage & Striping Plan
3rd Avenue & Lincoln Centre Drive



CCO #1 - 10/09/2017
CCO #2 - 10/27/2017
CCO #3 - 11/16/2017

Engineer's Stamp

Traffic Patterns
P.O. Box 25
Danville, CA 94526
O: (408) 916-8141
www.trafficpatterns.net
info@trafficpatterns.net

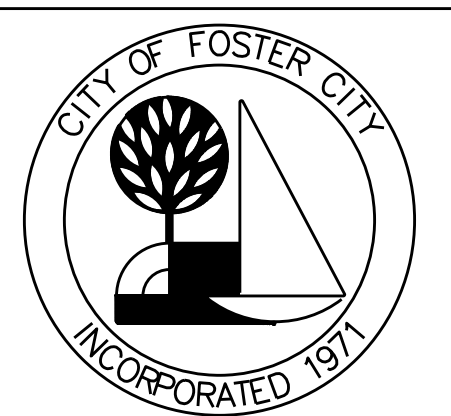
REVISIONS:			
NO.	DATE	DESCRIPTION	BY

APPROVED BY:

JEFF C. MONEDA
DIRECTOR OF PUBLIC WORKS/CITY ENGINEER

DESIGNED BY:

JAIME O. RODRIGUEZ
PRINCIPAL, TRAFFIC PATTERNS



ESTERO MUNICIPAL IMPROVEMENT DISTRICT
CITY OF FOSTER CITY, CALIFORNIA
CIP NO. 301-658

TRAFFIC IMPROVEMENTS AT
LINCOLN CENTRE DRIVE &
EAST THIRD AVENUE

SIGNAGE & STRIPING PLAN

SCALE:	
DRAWN BY: XX	DATE: 0/0/00
CHK BY: XX	DATE: 0/0/00
SURVEY BY:	DATE: 0/0/00
BOOK NO:	DATE: 0/0/00

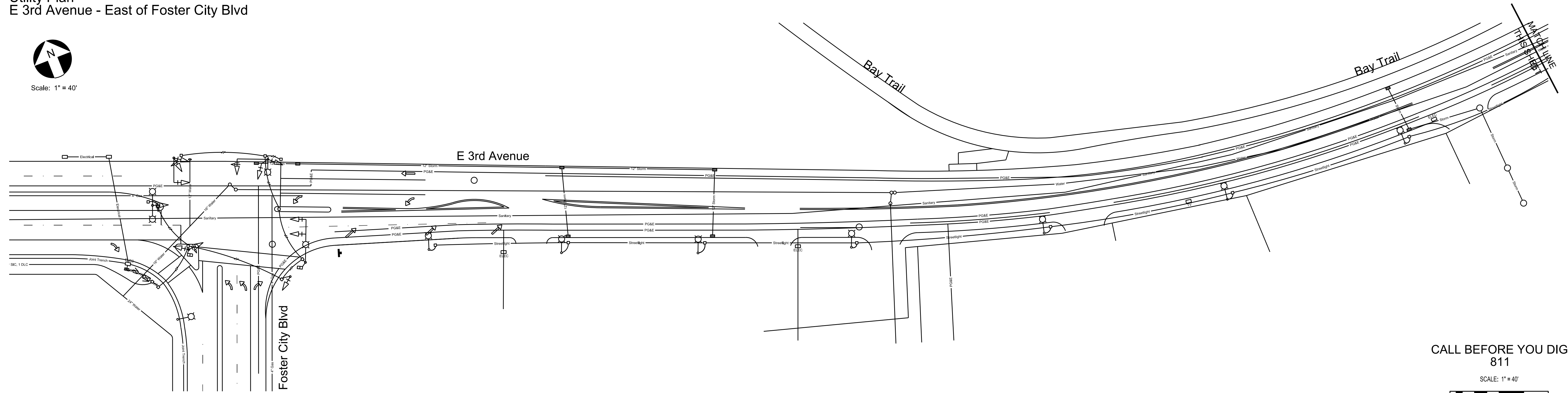
SHEET

6 OF 8

Utility Plan
E 3rd Avenue - East of Foster City Blvd

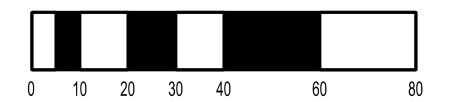


Scale: 1" = 40'



CALL BEFORE YOU DIG
811

SCALE: 1" = 40'

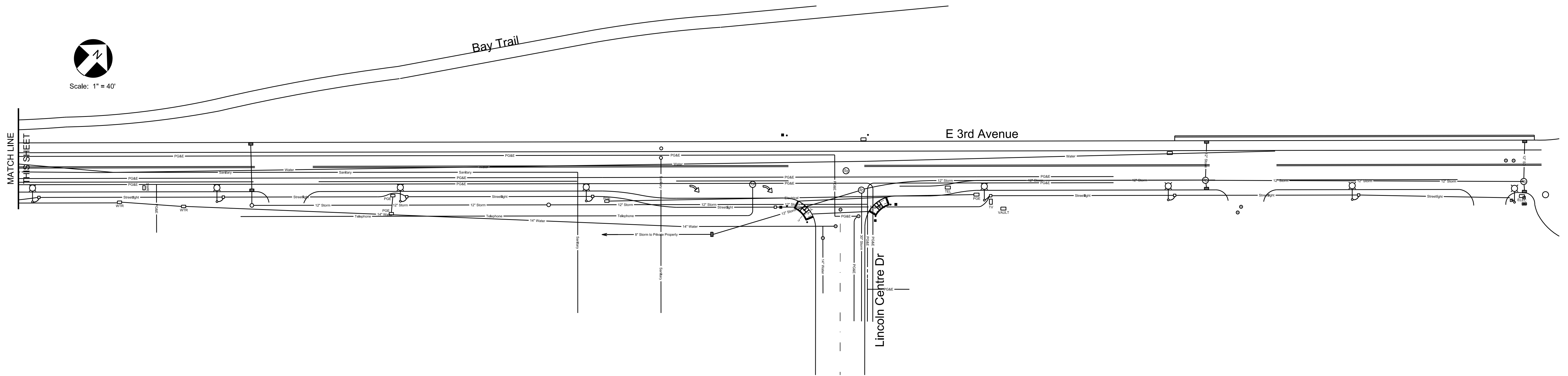


VERIFY SCALE WHEN
PRINTING DIGITAL FILES

Utility Plan
E 3rd Avenue & Lincoln Centre Drive



Scale: 1" = 40'



CCO #1 - 10/09/2017
CCO #2 - 10/27/2017
CCO #3 - 11/16/2017



Traffic
Patterns

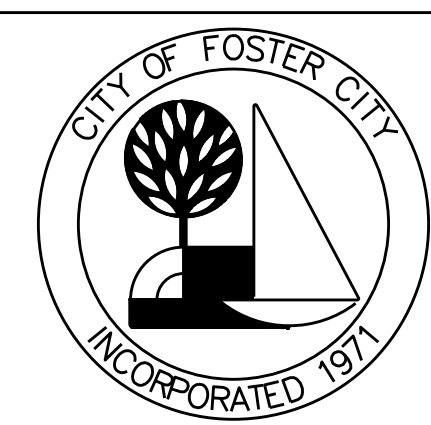
P.O. Box 25
Danville, CA 94526
O: (408) 916-8141
www.trafficpatterns.net
info@trafficpatterns.net

Engineer's Stamp



REVISIONS:			
NO.	DATE	DESCRIPTION	BY

APPROVED BY:	
JEFF C. MONEDA DIRECTOR OF PUBLIC WORKS/CITY ENGINEER	DATE
DESIGNED BY:	DATE
JAIME O. RODRIGUEZ PRINCIPAL, TRAFFIC PATTERNS	DATE



ESTERO MUNICIPAL IMPROVEMENT DISTRICT
CITY OF FOSTER CITY, CALIFORNIA
CIP NO. 301-658

TRAFFIC IMPROVEMENTS AT
LINCOLN CENTRE DRIVE &
EAST THIRD AVENUE

UTILITY PLAN

SCALE:	
DRAWN BY: XX	DATE: 0/0/00
CHK BY: XX	DATE: 0/0/00
SURVEY BY:	DATE: 0/0/00
BOOK NO:	DATE: 0/0/00

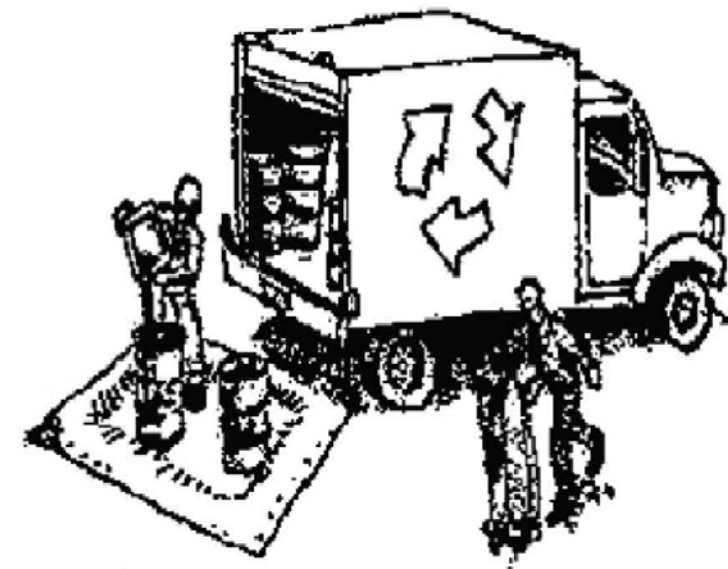
SHEET

7 OF 8

Construction Best Management Practices (BMPs)

Construction projects are required to implement the stormwater best management practices (BMP) on this page, as they apply to your project, all year long.

Materials & Waste Management



Non-Hazardous Materials

- Barn and cover stockpiles of sand, dirt or other construction material with tarps when rain is forecast or if not actively being used within 14 days.
- Use (but don't overuse) reclaimed water for dust control.

Hazardous Materials

- Label all hazardous materials and hazardous wastes (such as pesticides, paints, thinners, solvents, fuel, oil, and antifreeze) in accordance with city, county, state and federal regulations.
- Store hazardous materials and wastes in water tight containers, store in appropriate secondary containment, and cover them at the end of every work day or during wet weather or when rain is forecast.
- Follow manufacturer's application instructions for hazardous materials and be careful not to use more than necessary. Do not apply chemicals outdoors when rain is forecast within 24 hours.
- Arrange for appropriate disposal of all hazardous wastes.

Waste Management

- Cover waste disposal containers securely with tarps at the end of every work day and during wet weather.
- Check waste disposal containers frequently for leaks and to make sure they are not overfilled. Never hose down a dumpster on the construction site.
- Clean or replace portable toilets, and inspect them frequently for leaks and spills.
- Dispose of all wastes and debris properly. Recycle materials and wastes that can be recycled (such as asphalt, concrete, aggregate base materials, wood, gyp board, pipe, etc.)
- Dispose of liquid residues from paints, thinners, solvents, glues, and cleaning fluids as hazardous waste.

Construction Entrances and Perimeter

- Establish and maintain effective perimeter controls and stabilize all construction entrances and exits to sufficiently control erosion and sediment discharges from site and tracking off site.
- Sweep or vacuum any street tracking immediately and secure sediment source to prevent further tracking. Never hose down streets to clean up tracking.

Equipment Management & Spill Control



Maintenance and Parking

- Designate an area, fitted with appropriate BMPs, for vehicle and equipment parking and storage.
- Perform major maintenance, repair jobs, and vehicle and equipment washing off site.
- If refueling or vehicle maintenance must be done onsite, work in a bermed area away from storm drains and over a drip pan or drop cloths big enough to collect fluids. Recycle or dispose of fluids as hazardous waste.
- If vehicle or equipment cleaning must be done onsite, clean with water only in a bermed area that will not allow rinse water to run into gutters, streets, storm drains, or surface waters.
- Do not clean vehicle or equipment onsite using soaps, solvents, degreasers, or steam cleaning equipment.

Spill Prevention and Control

- Keep spill cleanup materials (e.g., rags, absorbents and cat litter) available at the construction site at all times.
- Inspect vehicles and equipment frequently for and repair leaks promptly. Use drip pans to catch leaks until repairs are made.
- Clean up spills or leaks immediately and dispose of cleanup materials properly.
- Do not hose down surfaces where fluids have spilled. Use dry cleanup methods (absorbent materials, cat litter, and/or rags).
- Sweep up spilled dry materials immediately. Do not try to wash them away with water, or bury them.
- Clean up spills on dirt areas by digging up and properly disposing of contaminated soil.
- Report significant spills immediately. You are required by law to report all significant releases of hazardous materials, including oil. To report a spill: 1) Dial 911 or your local emergency response number, 2) Call the Governor's Office of Emergency Services Warning Center, (800) 852-7550 (24 hours).

Earthmoving



- Schedule grading and excavation work during dry weather.
- Stabilize all denuded areas, install and maintain temporary erosion controls (such as erosion control fabric or bonded fiber matrix) until vegetation is established.
- Remove existing vegetation only when absolutely necessary, and seed or plant vegetation for erosion control on slopes or where construction is not immediately planned.
- Prevent sediment from migrating offsite and protect storm drain inlets, gutters, ditches, and drainage courses by installing and maintaining appropriate BMPs, such as fiber rolls, silt fences, sediment basins, gravel bags, berms, etc.
- Keep excavated soil on site and transfer it to dump trucks on site, not in the streets.

Contaminated Soils

- If any of the following conditions are observed, test for contamination and contact the Regional Water Quality Control Board:
 - Unusual soil conditions, discoloration, or odor.
 - Abandoned underground tanks.
 - Abandoned wells
 - Buried barrels, debris, or trash.

Paving/Asphalt Work

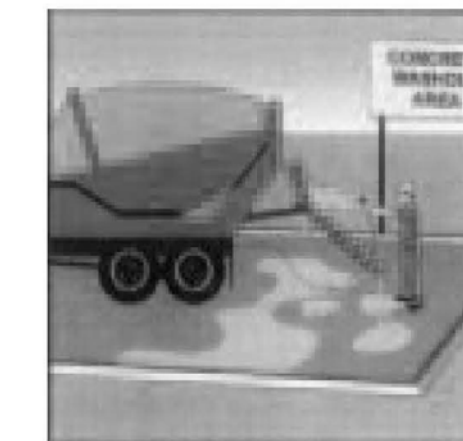


- Avoid paving and seal coating in wet weather or when rain is forecast, to prevent materials that have not cured from contacting stormwater runoff.
- Cover storm drain inlets and manholes when applying seal coat, tack coat, slurry seal, fog seal, etc.
- Collect and recycle or appropriately dispose of excess abrasive gravel or sand. Do NOT sweep or wash it into gutters.
- Do not use water to wash down fresh asphalt concrete pavement.

Sawcutting & Asphalt/Concrete Removal

- Protect nearby storm drain inlets when saw cutting. Use filter fabric, catch basin inlet filters, or gravel bags to keep slurry out of the storm drain system.
- Shovel, absorb, or vacuum saw-cut slurry and dispose of all waste as soon as you are finished in one location or at the end of each work day (whichever is sooner!).
- If sawcut slurry enters a catch basin, clean it up immediately.

Concrete, Grout & Mortar Application



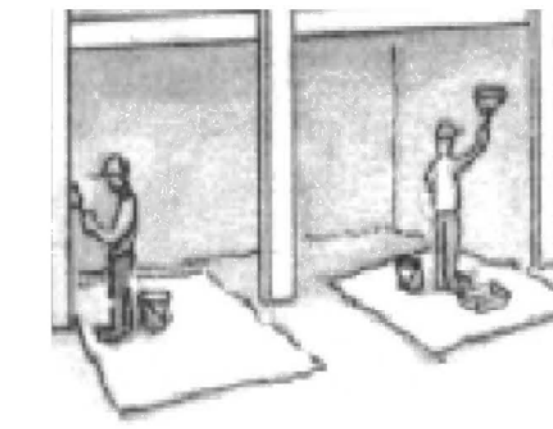
- Store concrete, grout, and mortar away from storm drains or waterways, and on pallets under cover to protect them from rain, runoff, and wind.
- Wash out concrete equipment/trucks offsite or in a designated washout area, where the water will flow into a temporary waste pit, and in a manner that will prevent leaching into the underlying soil or onto surrounding areas. Let concrete harden and dispose of as garbage.
- When washing exposed aggregate, prevent washwater from entering storm drains. Block any inlets and vacuum gutters, hose washwater onto dirt areas, or drain onto a bermed surface to be pumped and disposed of properly.

Landscaping



- Protect stockpiled landscaping materials from wind and rain by storing them under tarps all year-round.
- Stack bagged material on pallets and under cover.
- Discontinue application of any erodible landscape material within 2 days before a forecast rain event or during wet weather.

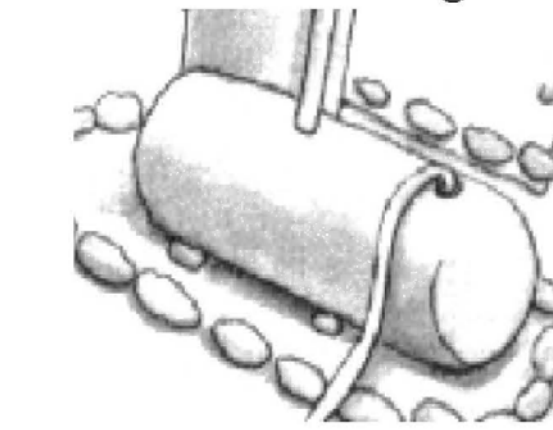
Painting & Paint Removal



Painting Cleanup and Removal

- Never clean brushes or rinse paint containers into a street, gutter, storm drain, or stream.
- For water-based paints, paint out brushes to the extent possible, and rinse into a drain that goes to the sanitary sewer. Never pour paint down a storm drain.
- For oil-based paints, paint out brushes to the extent possible and clean with thinner or solvent in a proper container. Filter and reuse thinners and solvents. Dispose of excess liquids as hazardous waste.
- Paint chips and dust from non-hazardous dry stripping and sand blasting may be swept up or collected in plastic drop cloths and disposed of as trash.
- Chemical paint stripping residue and chips and dust from marine paints or paints containing lead, mercury, or tributyltin must be disposed of as hazardous waste. Lead based paint removal requires a state-certified contractor.

Dewatering



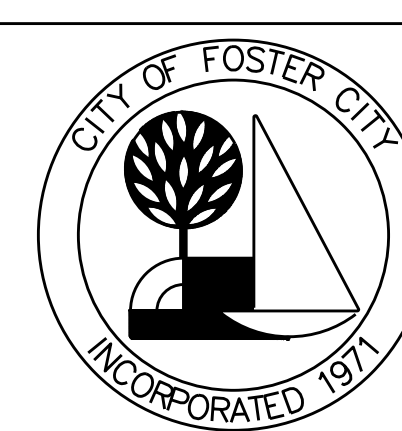
- Discharges of groundwater or captured runoff from dewatering operations must be properly managed and disposed. When possible send dewatering discharge to landscaped area or sanitary sewer. If discharging to the sanitary sewer call your local wastewater treatment plant.
- Divert run-on water from offsite away from all disturbed areas.
- When dewatering, notify and obtain approval from the local municipality before discharging water to a street gutter or storm drain. Filtration or diversion through a basin, tank, or sediment trap may be required.
- In areas of known or suspected contamination, call your local agency to determine whether the ground water must be tested. Pumped groundwater may need to be collected and hauled off-site for treatment and proper disposal.

Storm drain polluters may be liable for fines of up to \$10,000 per day!

CCO #1 - 10/09/2017
CCO #2 - 10/27/2017
CCO #3 - 11/16/2017

REVISIONS:			
NO.	DATE	DESCRIPTION	BY

APPROVED BY:	DATE
JEFF C. MONEDA DIRECTOR OF PUBLIC WORKS/CITY ENGINEER	
DESIGNED BY:	DATE
JAIME O. RODRIGUEZ PRINCIPAL, TRAFFIC PATTERNS	



SCALE:	
DRAWN BY: XX	DATE: 0/0/00
CHK BY: XX	DATE: 0/0/00
SURVEY BY:	
BOOK NO:	DATE: 0/0/00

SHEET

8 OF 8